

STAINLESS STEEL
PUSH BUTTON Ø19

MP19I









STAINLESS STEEL PUSH BUTTON

SELECTION TABLE

MP 19I-FM01-3S24-0

① ② ③ ④ ⑤ ⑥ ⑦ ⑧ ⑨ ⑩

①	MP	MONOBLOCK PUSH BUTTON
②	19	Ø19MM
③	I	STAINLESS STEEL
④	F	FLUSH
	E	EXTENDED HEAD
⑤	M	MOMENTARY
	L	LATCHING
⑥	01	RED LED 
	02	GREEN LED 
	03	BLUE LED 
	04	WHITE LED 
	05	YELLOW LED 
	07	ORANGE LED 
	⑦	3
11		2NO + 2NC
⑧	S	SILVER PLATED PIN TERMINAL
	G	GOLD PLATED TERMINALS
⑨	24	24VAC/DC
⑩	0	NO ILLUMINATED
	1	RING ILLUMINATED
	2	DOT ILLUMINATED

STAINLESS STEEL PUSH BUTTON SPECIFICATIONS

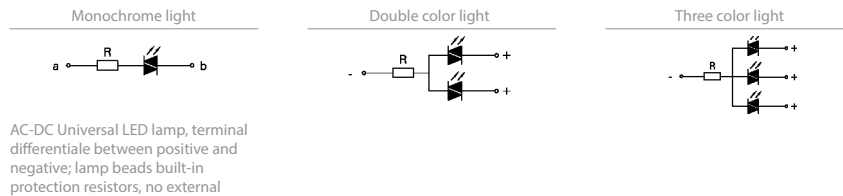
PARAMETERS

Switch rating	AC:5A/250V	Explosion proof grade	IK08
Operating temperature	-40°C to +80°C	Degree of protection	IP67
Contact resistance	≤50MΩ	Operation pressure	3-5N
Insulation resistance	≥1000MΩ	Operation stroke	3mm
Dielectric strength	AC1780V	Screw torque	5-14N
Mechanical life	≥100000 operations	Shell material	Nickel-plated brass/Stainless steel AISI304
Electrical life	≥50000 operations	Press key material	Stainless steel
Contact type	Single-break fast motion changeover contact	Base material	Plastic base
Contact configuration	1NO 1NC/2NO 2NC	Contact material	Silver alloy

LED LAMP SPECIFICATIONS

Lamp type	Bi-directional LED lamp (AC DC Universal)	Rated current	about 15mA
Rated voltage	1,8V, 2,8V, 6V, 12V, 24V, 36V, 110V, 220V	Color	R G B O W
Note: Unidirectional DC LED lamp can be customized if needed; other voltage specification could be special made		Life	50000hours (reference value)

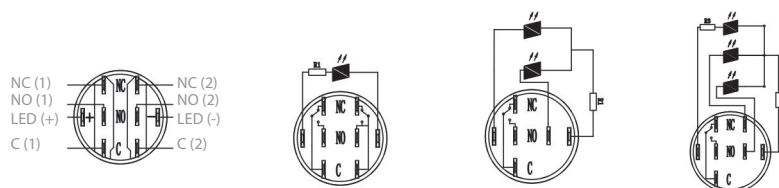
Lamp equivalent circuit



SWITCH STRUCTURE EXPLANATION

Type	Symbol	Diagram	Explanation
C			Single breakpoint fast moving contact switch with three terminals

PIN DESCRIPTION



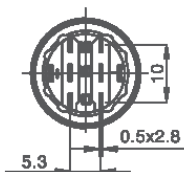
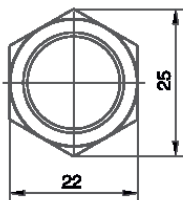
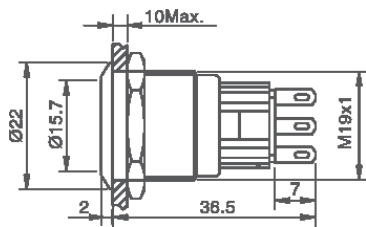
STAINLESS STEEL PUSH BUTTON

Ø19mm



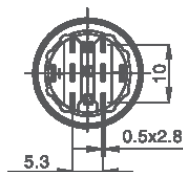
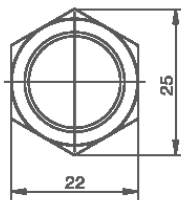
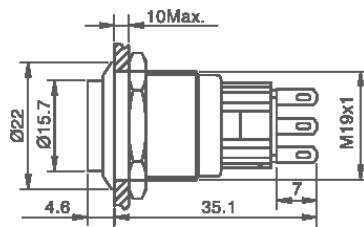
MP19I-F□□□□□24-0

Mounting hole size: Ø19mm
Shape: Flat round
Switch: Rating 5A/250VAC
Contact configuration: 1NO 1NC/2NO 2NC
Operation type: Momentary/Latching
The crust material: Nickel-plated Brass/Stainless Steel
Protection degree: IP67, IK08



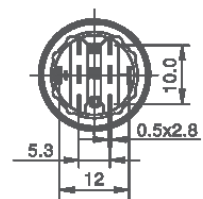
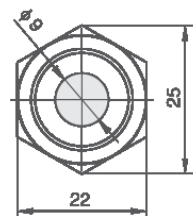
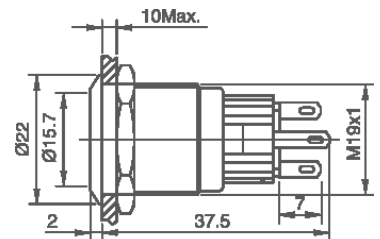
MP19I-E□□□□□24-0

Mounting hole size: Ø19mm
Shape: High round
Switch: Rating 5A/250VAC
Contact configuration: 1NO 1NC/2NO 2NC
Operation type: Momentary/Latching
The crust material: Nickel-plated Brass/Stainless Steel
Protection degree: IP67, IK08



MP19I-F□□□□□24-2

Mounting hole size: Ø19mm
Shape: Flat round dot illuminated
Switch: Rating 5A/250VAC
Contact configuration: 1NO 1NC/2NO 2NC
Operation type: Momentary/Latching
Lamp color: Red/Green/Yellow/Orange/Blue/White
The crust material: Nickel-plated Brass/Stainless Steel
Protection degree: IP67, IK08



STAINLESS STEEL PUSH BUTTON

Ø19mm



MP19I-E□□□□24-2

Mounting hole size: Ø19mm
 Shape: High round dot illuminated
 Switch: Rating 5A/250VAC
 Contact configuration: 1NO 1NC/2NO 2NC
 Operation type: Momentary/Latching
 Lamp color: Red/Green/Yellow/Orange/Blue/White
 The crust material: Nickel-plated Brass/Stainless Steel
 Protection degree: IP67, IK08



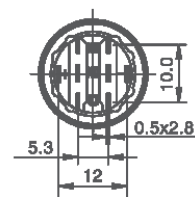
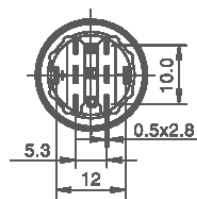
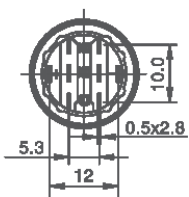
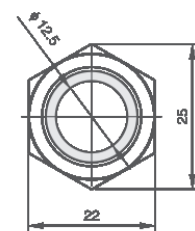
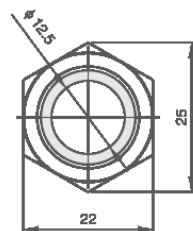
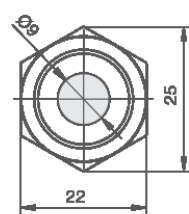
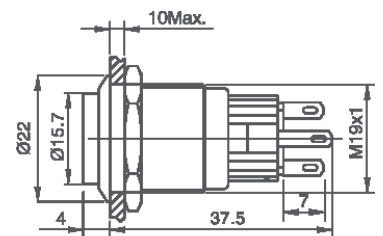
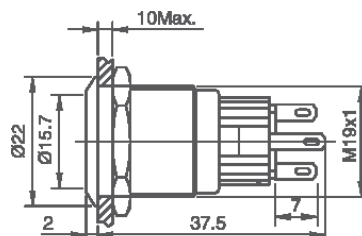
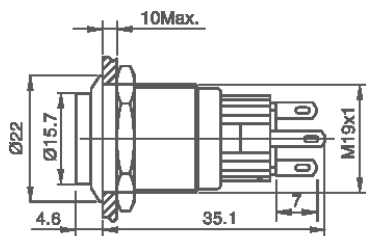
MP19I-F□□□□24-1

Mounting hole size: Ø19mm
 Shape: Flat round ring illuminated
 Switch: Rating 5A/250VAC
 Contact configuration: 1NO 1NC/2NO 2NC
 Operation type: Momentary/Latching
 Lamp color: Red/Green/Yellow/Orange/Blue/White
 The crust material: Nickel-plated Brass/Stainless Steel
 Protection degree: IP67, IK08



MP19I-E□□□□24-1

Mounting hole size: Ø19mm
 Shape: High round ring illuminated
 Switch: Rating 5A/250VAC
 Contact configuration: 1NO 1NC/2NO 2NC
 Operation type: Momentary/Latching
 Lamp color: Red/Green/Yellow/Orange/Blue/White
 The crust material: Nickel-plated Brass/Stainless Steel
 Protection degree: IP67, IK08





EMS
Electro Mechanical Systems

www.ems-sl.com